



SUNSHINE COAST ACCESS ADVISORY NETWORK Inc
Established 2010



About SCAAN Inc

The Sunshine Coast Access Advisory Network (SCAAN) Inc

- Established in 2010.
- An equal access group operating in the Sunshine Coast region.
- An incorporated not for profit registered charity.
- Committed to assisting people with disability to access the full range of opportunities the same as all citizens of the Sunshine Coast community.



About SCAAN Inc (cont)

AIMS:

- To increase awareness of the need for universal access in the community
- Through collaboration and engagement with local council, businesses, organisations, and the public in general.



About SCAAN Inc (cont)

Sunshine Coast Regional Council

- SCAAN Inc receives Council funding
- Works closely with the Sunshine Coast Regional Council
- To improve access to the built environment and the community for people with disability in our region.



Become a SCAAN member

- Do you, or someone you know have a disability?
- Do you have difficulty accessing the community the same as everyone else?
- Do you have a passion for change?

SCAAN meetings



When: Third Friday of each month.

Where: Vision Australia building.

Where: George Street, Maroochydore.

Time: 10-12pm.



SCAAN achievements

Worked with Sunshine Coast Regional Council to:

- improve beach access for wheelchairs at Alexandra Headland.
- improve entry footpaths into the Maroochydore CBD.
- re-fit major road crossings in order to provide equal access at:
 - a) Nicklin Way, Kawana.
 - b) Bowman Road & Baldwin St., Caloundra.

SCAAN achievements (cont)



Worked with Sunshine Coast Regional Council to:

- upgrade Tactile Ground Surface Indicators (TGSI's) and wayfinding in the region.
- bring Caloundra and Maroochydore Bus Stations up to current access standards.

SCAAN achievements (cont)



Worked with Nambour Hospital and Sunshine Coast University Hospital (SCUH) to:

- improve access, wayfinding, and delivery of care for people with disabilities when accessing healthcare services.

SCAAN achievements (cont)



CASE Study:

Ryan vs Sunshine Coast Hospital & Health Service

(SCHHS):

- The late Peter Ryan was legally blind.
- Wayfinding was difficult.
- No signage.

SCAAN achievements (cont)



Ryan vs SCHHS:

- I parked in an accessible parking bay at ground level and then was unsure how to get to the hospital from ground level.



SCAAN achievements (cont)



Ryan vs SCHHS:

- I could not find the tactile ground indicators (TGI) leading to the entrance.



SCAAN achievements (cont)



Ryan vs SCHHS:

- Highly reflective lift car surface creates visual confusion.





SCAAN achievements (cont)

Ryan vs SCHHS:

- Information sign overwhelming, no braille.



SCAAN achievements (cont)



Ryan vs SCHHS:

- Too much the same colour, spatial navigation difficult.
- No signage.

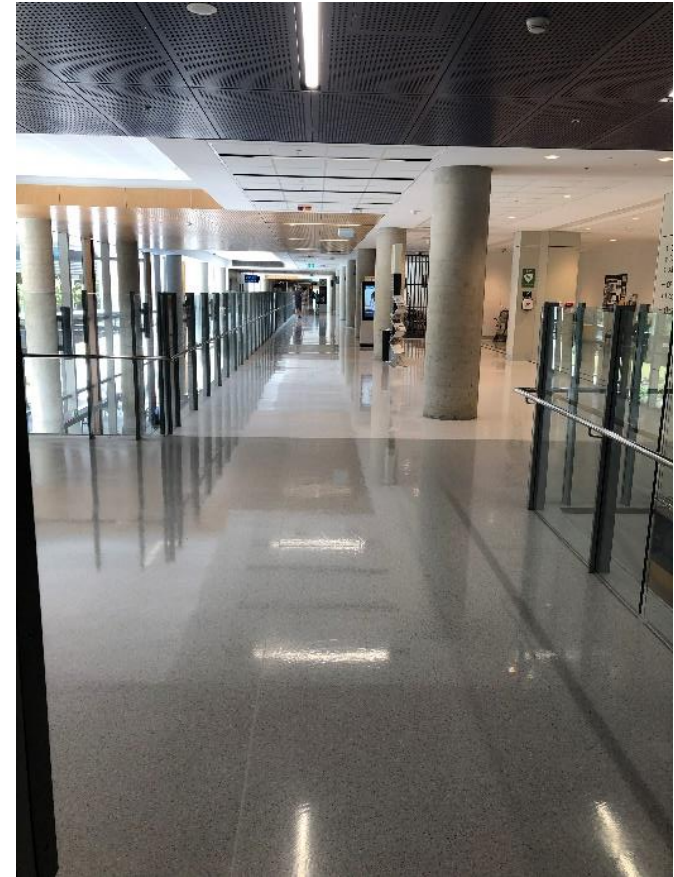


SCAAN achievements (cont)



Ryan vs SCHHS:

- General view at first floor. Highly reflective flooring, creating visual confusion.
- Absence of signage.

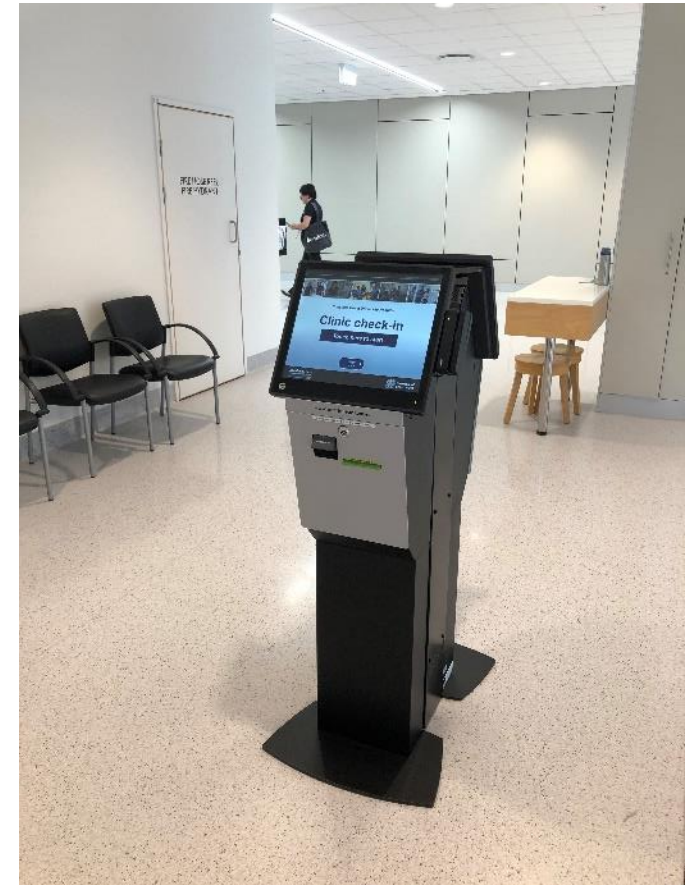


SCAAN achievements (cont)



Ryan vs (SCHHS):

- Check in screen:
No provision for people with vision impairment.





SCAAN contacts

Further information.

Website: www.scaan.org.au

Contact:

President, Trevor Rice

M: 0429 484 744

E: president@scaan.org.au